



BT-2

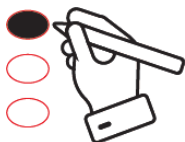
PCT _ _ _ _



OFFICIAL BALLOT / 正式選票
Consolidated Special Municipal Election
City and County of San Francisco, February 15, 2022
聯合特別市政選舉
三藩市市縣，2022年2月15日



INSTRUCTIONS TO VOTERS / 選民須知



Use a pencil or pen with dark ink to make your selections.
Fill in the oval to the right of your choice, as shown in the picture.
To vote for a qualified write-in candidate, write the candidate's name in the space at the end of the candidate list and fill in the oval.
If you make a mistake, you may request a new ballot.

使用鉛筆或深色墨水的筆來填劃您的選擇。
填塗在您的選擇右側的橢圓圈，如圖所示。
如要投票給某位合資格補寫候選人，請在候選人名單末提供的位置上填寫此人的姓名，並填塗橢圓圈。
如果填寫錯誤，您可以要求一份新的選票。

此選票提供中文版本。郵寄投票：請致電 (415) 554-4367。親身投票：請詢問投票站工作人員。
Esta boleta está disponible en español. Por correo: llame al (415) 554-4366. En persona: pregunte a un trabajador electoral.
Makukuha ang balotang ito sa wikang Filipino. Sa pamamagitan ng koreo: tumawag sa (415) 554-4310. Nang personal: magtanong sa manggagawa sa lugar ng botohan.

Voter-Nominated and Nonpartisan Offices

All voters, regardless of the party preference they disclosed upon registration, or refusal to disclose a party preference, may vote for any candidate for a voter-nominated or nonpartisan office. The party preference, if any, designated by a candidate for a voter-nominated office is selected by the candidate and is shown for the information of the voters only. It does not imply that the candidate is nominated or endorsed by the party or that the party approves of the candidate. The party preference, if any, of a candidate for a nonpartisan office does not appear on the ballot.

選民提名職位和非黨派職位

所有選民，不論在登記時披露政黨傾向或謝絕表態，均可投票給選民提名職位或非黨派職位的任何候選人。如果選民提名職位的候選人表明政黨傾向，這是該候選人之個人選擇，而且僅提供作為選民參考。它並非表示候選人受到該政黨提名或舉名支持，也不代表候選人受到該政黨認可。選票上的非黨派職位不會列出候選人的政黨傾向（若有）。

STATE / 州

STATE ASSEMBLY MEMBER, DISTRICT 17

州眾議員，第17選區

Vote for One / 選一人

DAVID CAMPOS 甘大為

Civil Rights Attorney / 民權律師

Party Preference: Democratic / 政黨傾向：民主黨



MATT HANEY 楊馳馬

Supervisor, City and County of San Francisco / 三藩市市縣市議員

Party Preference: Democratic / 政黨傾向：民主黨



BILAL MAHMOOD 馬百樂

Small Business Owner / 小企業主

Party Preference: Democratic / 政黨傾向：民主黨



THEA SELBY 秀蘋

Member, City College of San Francisco Board of Trustees / 三藩市市立大學董事會成員

Party Preference: Democratic / 政黨傾向：民主黨



MEASURES SUBMITTED TO THE VOTERS / 提交選民投票的提案

SCHOOL PROPOSITIONS / 學校提案

A Shall Alison Collins be recalled (removed) from the School Board for the San Francisco Unified School District?

是否應該罷免（撤除）高勵思 (Alison Collins) 在三藩市聯合校區教育委員會的公職？

YES / 贊成



NO / 反對



B Shall Gabriela López be recalled (removed) from the School Board for the San Francisco Unified School District?

是否應該罷免（撤除）盧佩思 (Gabriela López) 在三藩市聯合校區教育委員會的公職？

YES / 贊成



NO / 反對



C Shall Faauuga Moliga be recalled (removed) from the School Board for the San Francisco Unified School District?

是否應該罷免（撤除）莫力加 (Faauuga Moliga) 在三藩市聯合校區教育委員會的公職？

YES / 贊成



NO / 反對



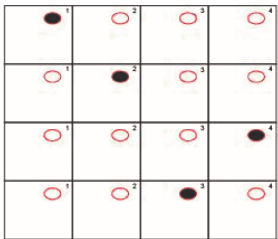
Continue voting on the back of this card.

請繼續在此卡背面投票。



1/1 CH

INSTRUCTIONS TO VOTERS / 選民須知



Use a pencil or pen with dark ink.
Rank candidates in the order of your choice.
Fill in the oval:
• In the 1st column for your 1st choice.
• In the 2nd column for your 2nd choice.
• In the 3rd column for your 3rd choice, and so on.
Do not fill in more than one oval:

- In a column.
- For a candidate.

To vote for a qualified write-in candidate, write the candidate's name in the space at the end of the candidate list and fill in the oval for the rank.
If you make a mistake, you may request a new ballot.



使用鉛筆或深色墨水的筆。
按您選擇的次序排名候選人。
填塗橢圓圈：
• 在第一列的為您的第一選擇。
• 在第二列的為您的第二選擇。
• 在第三列的為您的第三選擇，如此類推。
不可：
• 在一列填塗超過一個橢圓圈。
• 為一位候選人填塗超過一個橢圓圈。
如要投票給某位合資格補寫候選人，請在候選人名單末提供的位置上填寫此人的姓名，
並填塗其排名次序的橢圓圈。
如果填寫錯誤，您可以要求一份新的選票。

CITY AND COUNTY / 市縣

ASSESSOR-RECORDER
估值官-記錄官

	1st Choice 第一選擇	2nd Choice 第二選擇	3rd Choice 第三選擇
JOAQUÍN TORRES 郭華健 Assessor-Recorder, Appointed / 估值官-記錄官，委任	<input type="radio"/> ¹	<input type="radio"/> ²	<input type="radio"/> ³
	<input type="radio"/> ¹	<input type="radio"/> ²	<input type="radio"/> ³
	<input type="radio"/> ¹	<input type="radio"/> ²	<input type="radio"/> ³

