

Staff



(Left to right): Patrick Lynch, Tom Mayfield, Mario Paz, and Ken Addison.

MISSION

LAKEVIEW

SUNNYDALE

POTRERO HILL

CHINATOWN

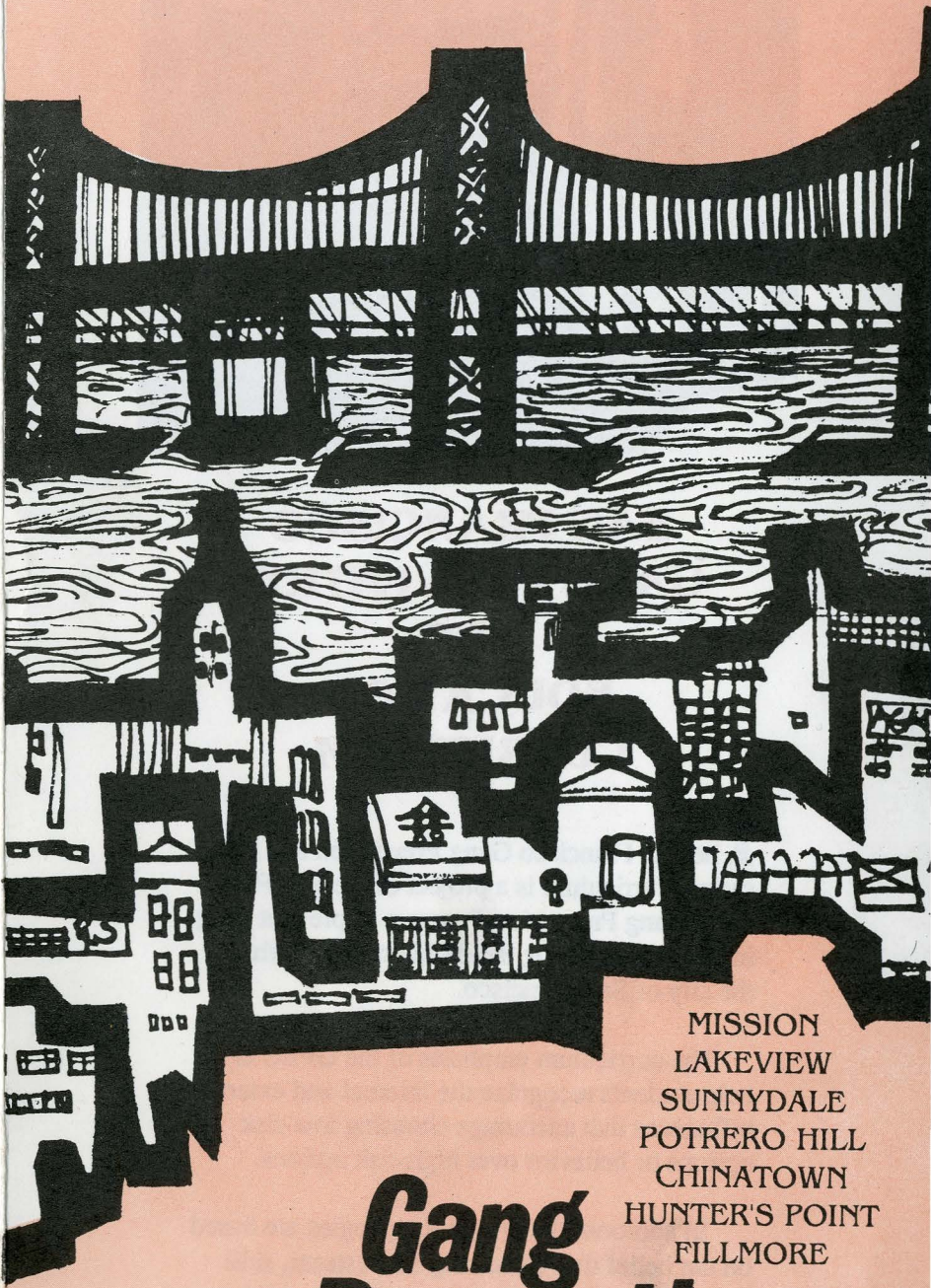
HUNTER'S POINT

FILLMORE

UNITE



GPEC
City Hall, Room 159
San Francisco, CA 94102

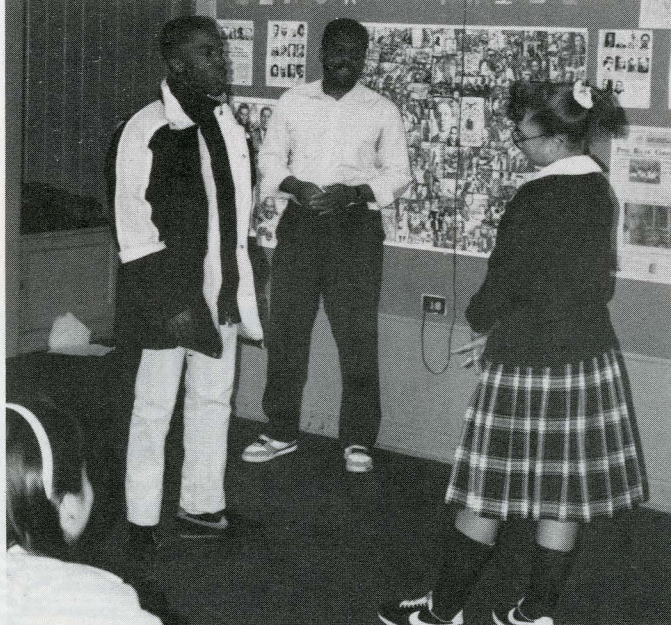


MISSION
LAKEVIEW
SUNNYDALE
POTRERO HILL
CHINATOWN
HUNTER'S POINT
FILLMORE

**Gang
Prevention
Program**



GPEC 554-6994

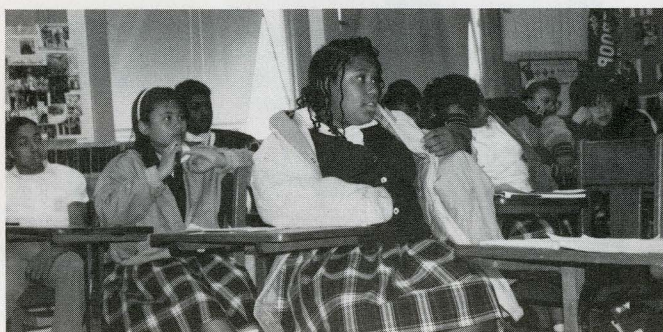


SAN FRANCISCO GANG PREVENTION AND EDUCATION CURRICULUM

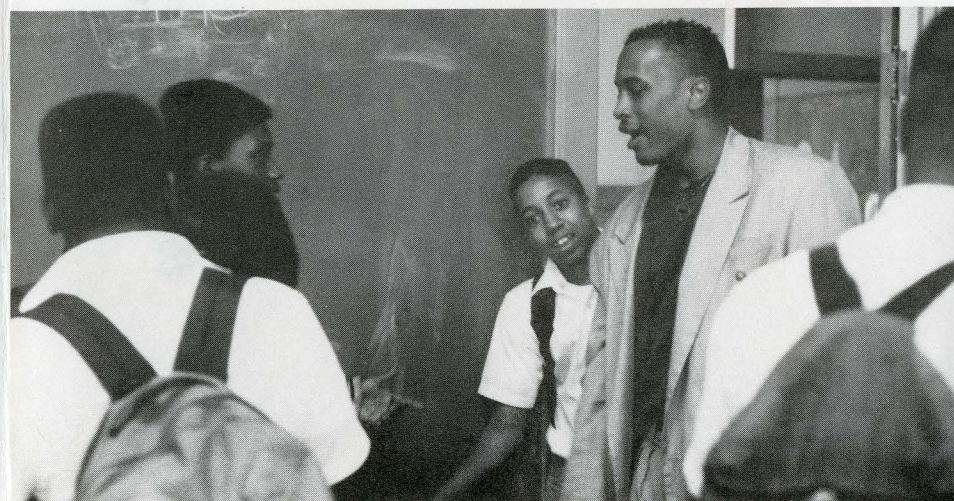
The San Francisco Gang Prevention and Education Curriculum is a project of the San Francisco Gang Prevention Program to prevent gang involvement among the children and youth in the city of San Francisco.

The curriculum emphasis of the GPEC is to help students recognize the internal and external influences that encourage choosing low-risk options or behavior over high-risk options.

In addition, the program strategies are based on the belief that enhancing self-esteem, skill building, and risk reduction enables a student to make sound low-risk lifestyle choices.

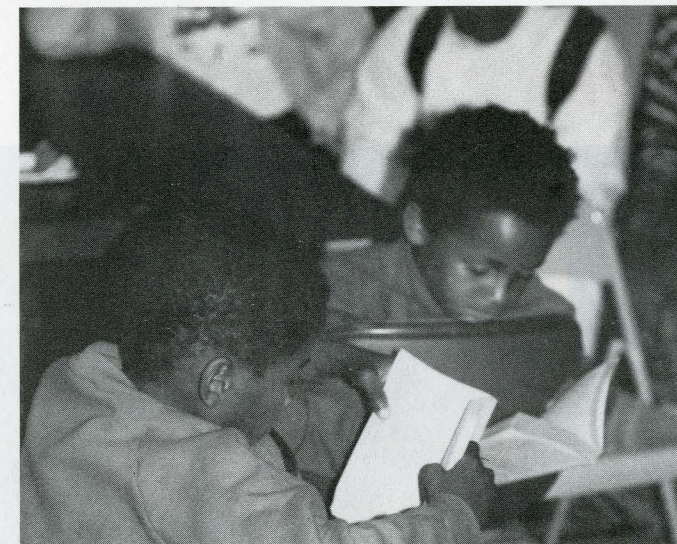
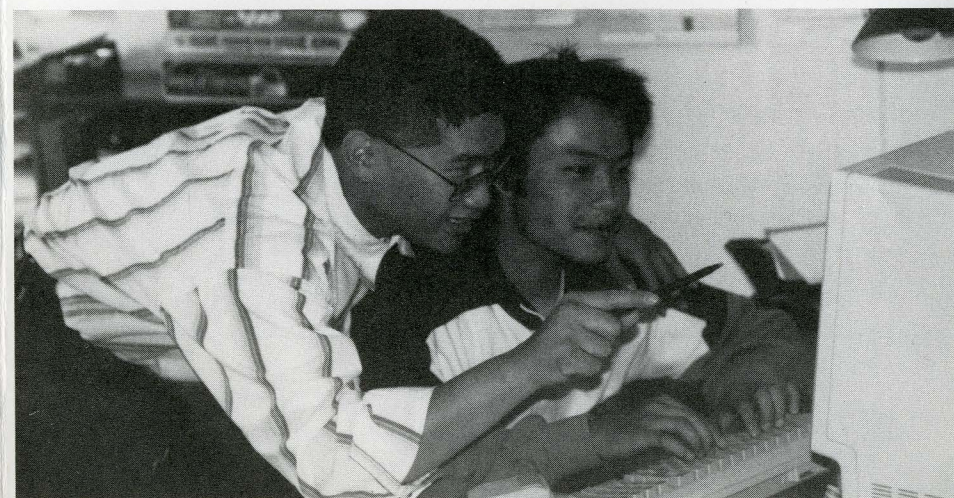


PEER LEADERSHIP PARTICIPATION



GPEC offers a variety of activity-oriented techniques which are designed to encourage student-generated responses to problem-solving situations.

An important element of GPEC is the use of student leaders, who are not involved in gang related activity, as positive role models in influencing younger students not to become gang members. These students will assist the facilitator during at least one class presentation and may remain on campus for the remainder of that day.



PARENT EDUCATION COMPONENT

The curriculum component for parents consists of ongoing support groups based upon presentations that are delivered by the Curriculum Specialist and other designated facilitators.

Support groups are an integral aspect of any parent education component given the reality that, for many youth, home frequently is not a happy place. Each year, thousands of young people are forced from home by the conduct of their parents; many flee drug, psychological, physical or sexual abuse or other family problems.

The GPEC Parent Education Component encourages increased involvement between parents and children with an emphasis on communication and education in building strong family relationships.

Artwork by Elaine DeJesus

