



BRANCH LIBRARY IN A SAN FRANCISCO PARK

Marina Branch, San Francisco, Calif., Public Library

Appleton & Wolfard, Architects

Lawrence Halprin, Landscape Architect

Ira S. Kessey, Structural Engineer

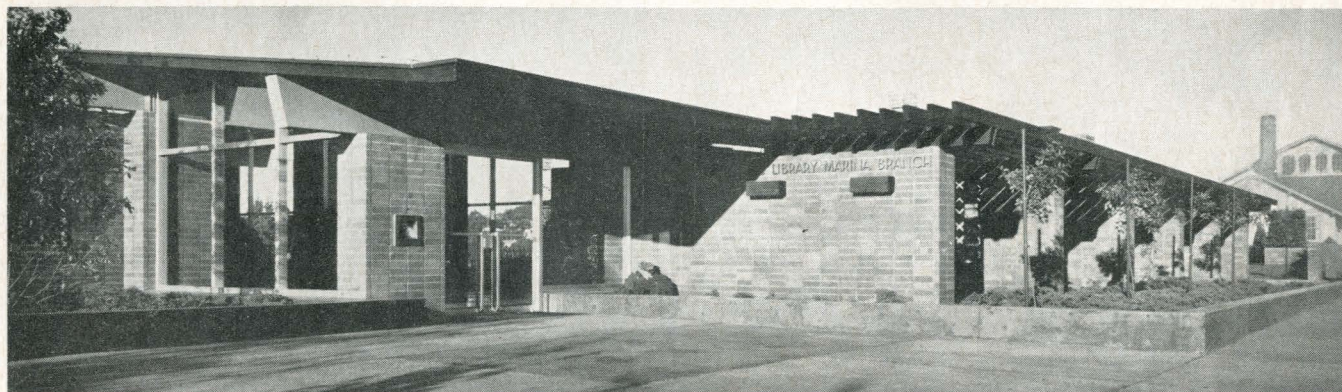
George K. Brokaw, Mechanical Engineer

Charles A. von Bergen, Electrical Engineer

SAN FRANCISCO PUBLIC LIBRARY MARINA BRANCH

THE NEW Marina Branch of the San Francisco Public Library is built in the southeast portion of a park and recreation area, Funston Playground, half a block from a shopping center, at an intersection of a cross-park pedestrian walk. The least desirable view is to the north and west; this and the direction of prevailing winds caused the designers to open the building toward the south and east. The glass wall of the main reading room (photograph above) fronts on a paved reading terrace and beyond, a pleasant expanse of playfield.

Also abutting on the reading terrace is the glass wall of the browsing room; this wing is screened by an arbor and "see-through" planting, the intent being to invite the passerby to the warmth of a fireplace and upholstered furniture within, yet not to create a commercial show window. In plan, the interior public spaces open generously into one another, and at the same time, they are set apart by the structure. Offices, etc. are small cubicles; the public rooms are divided only by book shelving.



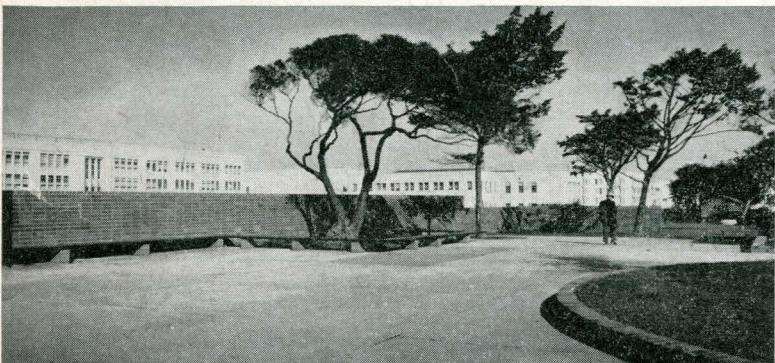
Phil Fein



1



2



3



Phil Felt

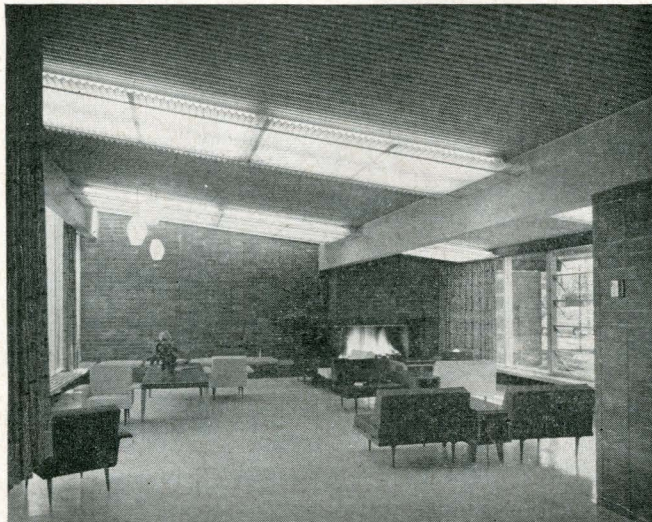
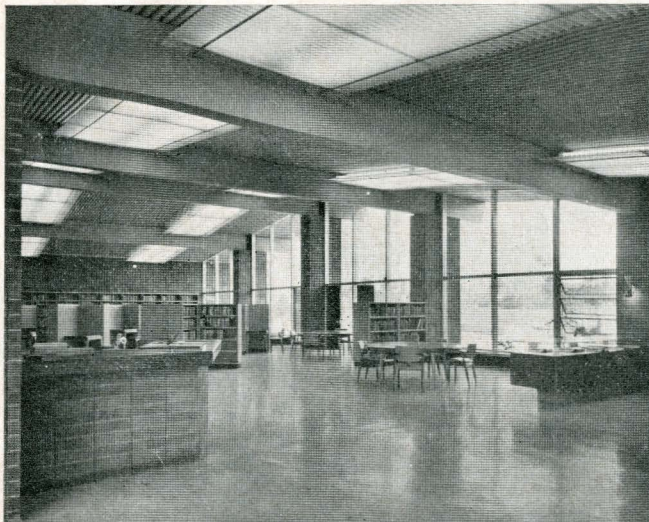
4

1, Entry. 2, Glass walls of reading and browsing rooms overlook paved terrace and, through a screen of trees, acres of lawn and playfield. 3, Brick wall screens less desirable view to west. 4, Charge desk. 5, Translucent plastic panels diffuse fluorescent light, reading room. 6, Browsing room fireplace, seen through floor-to-ceiling glass wall, invites passers-by. The simple structure is exposed inside and out: roof of laminated 2 by 4 and 2 by 6 planks, alternated, on laminated wood beams; masonry walls of reinforced brick; concrete floor slab on grade, with rubber tile finish. Children's area, adjoining the charge desk, has acoustical tile ceiling; so do office areas. Radiant heating is installed in the floor slab. Supplemental convectors are placed at the bottom of all glass wall areas. Service entrance is on the west side, where the view is unimportant

SAN FRANCISCO BRANCH LIBRARY

5

6





Reading room is divided by cases. Note light-controlling glass block clerestory above charge desk

