

SAN FRANCISCO
MARINA BQ.

BRICK and TILE



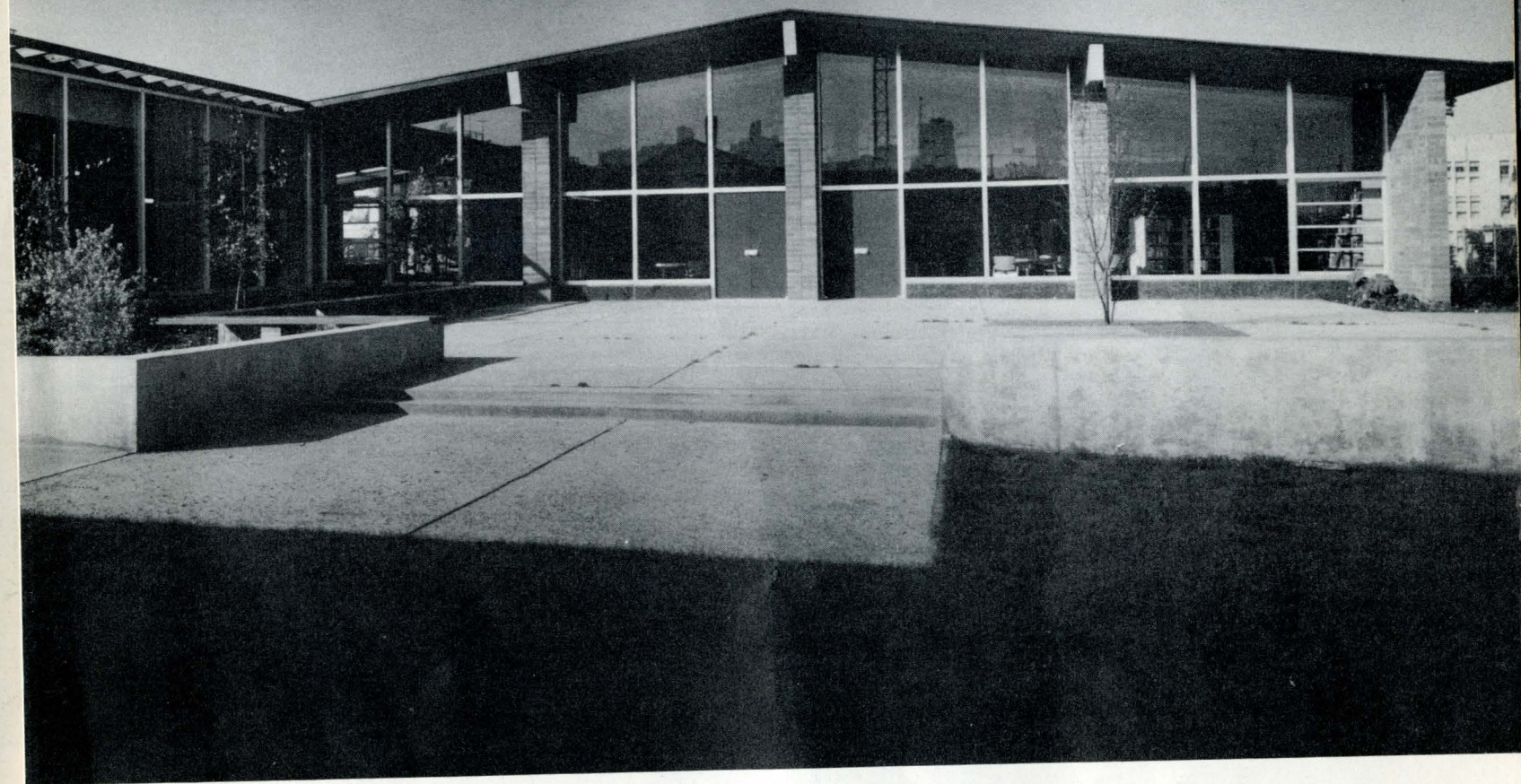
SAN FRANCISCO PUBLIC LIBRARY MARINA BRANCH

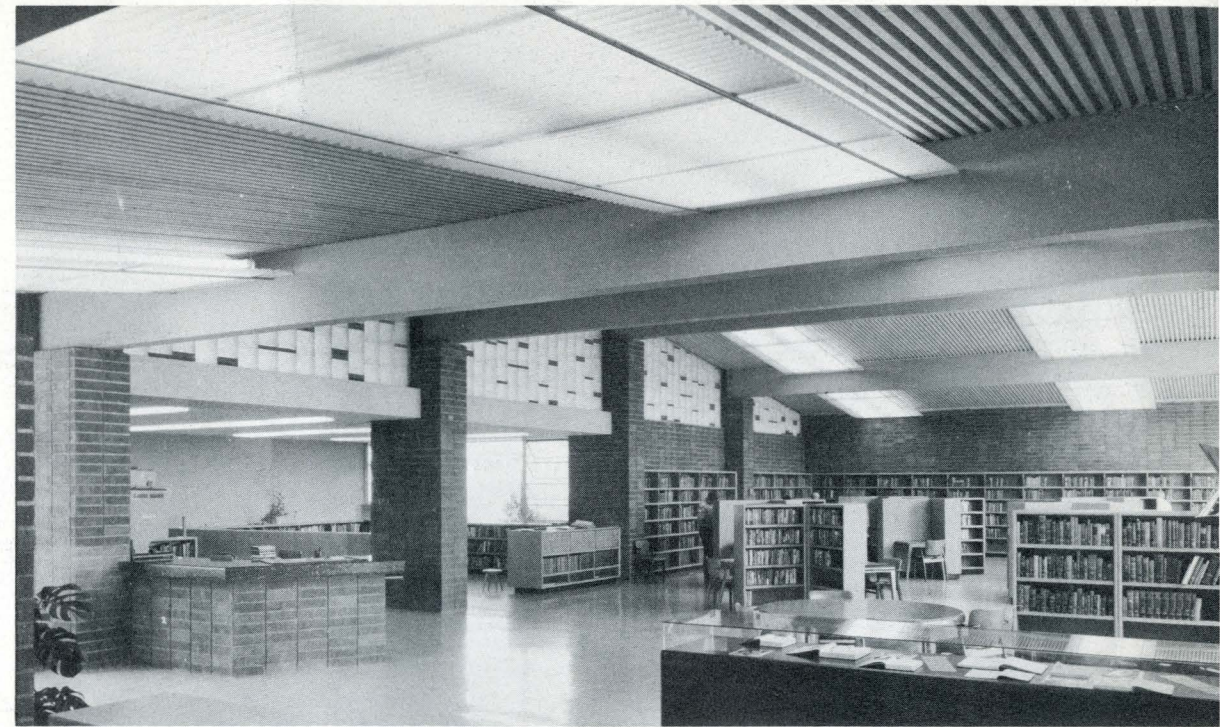
Appleton & Wolford, Architects

COLOR and its relationship to modern architecture has always been a subject of importance to the manufacturer of clay products. Starting with this issue, BRICK AND TILE will present each month, a full-color cover to illustrate the wide range of shades and textures available in clay products masonry.

Featured in this issue is the Marina Branch of the San Francisco Public Library which is constructed of reinforced grouted norman brick masonry with rowlock stretcher units in stack bond. Shown on the cover and these pages are details of main entrance, as well as patio entrance off main reading room.

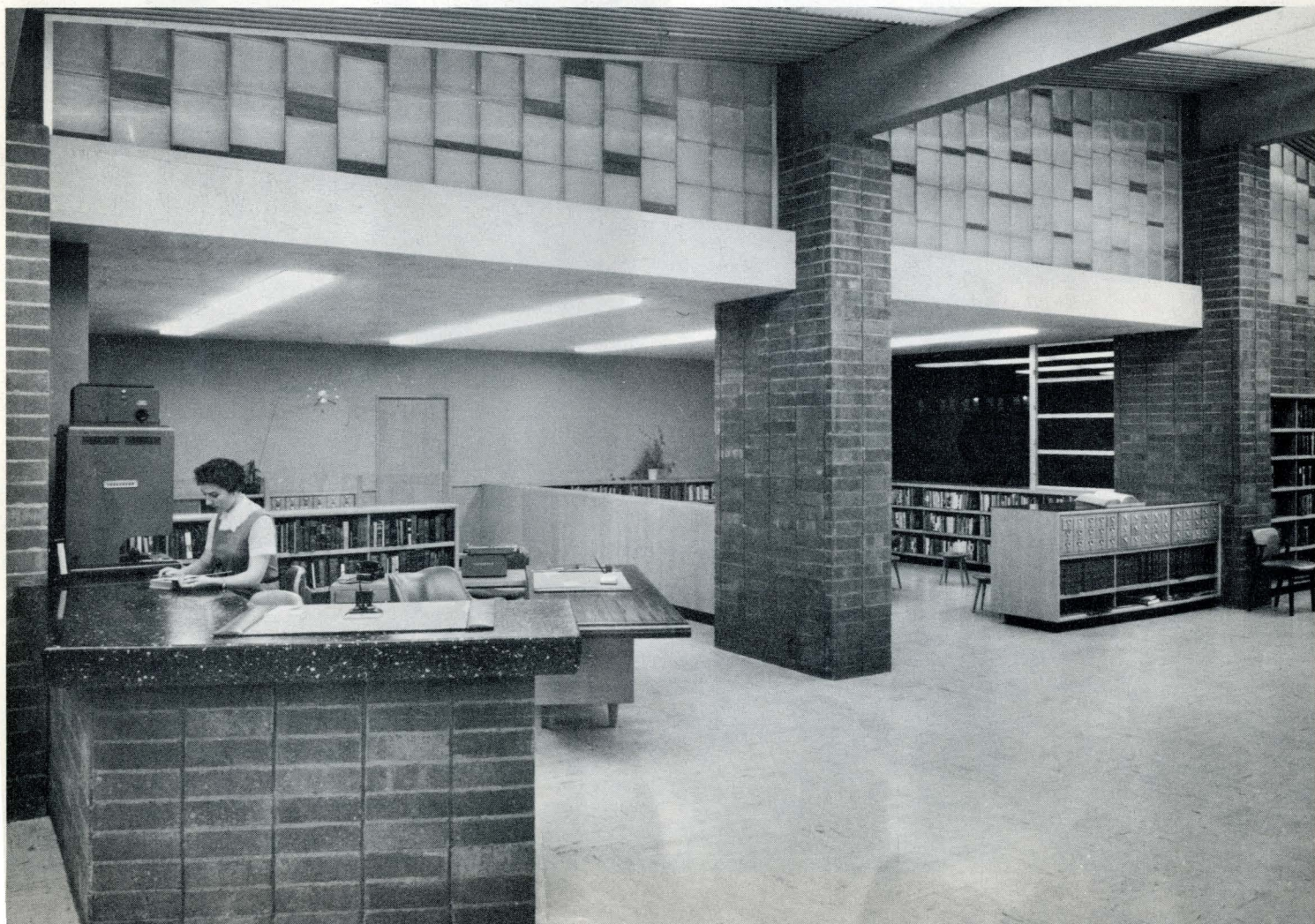
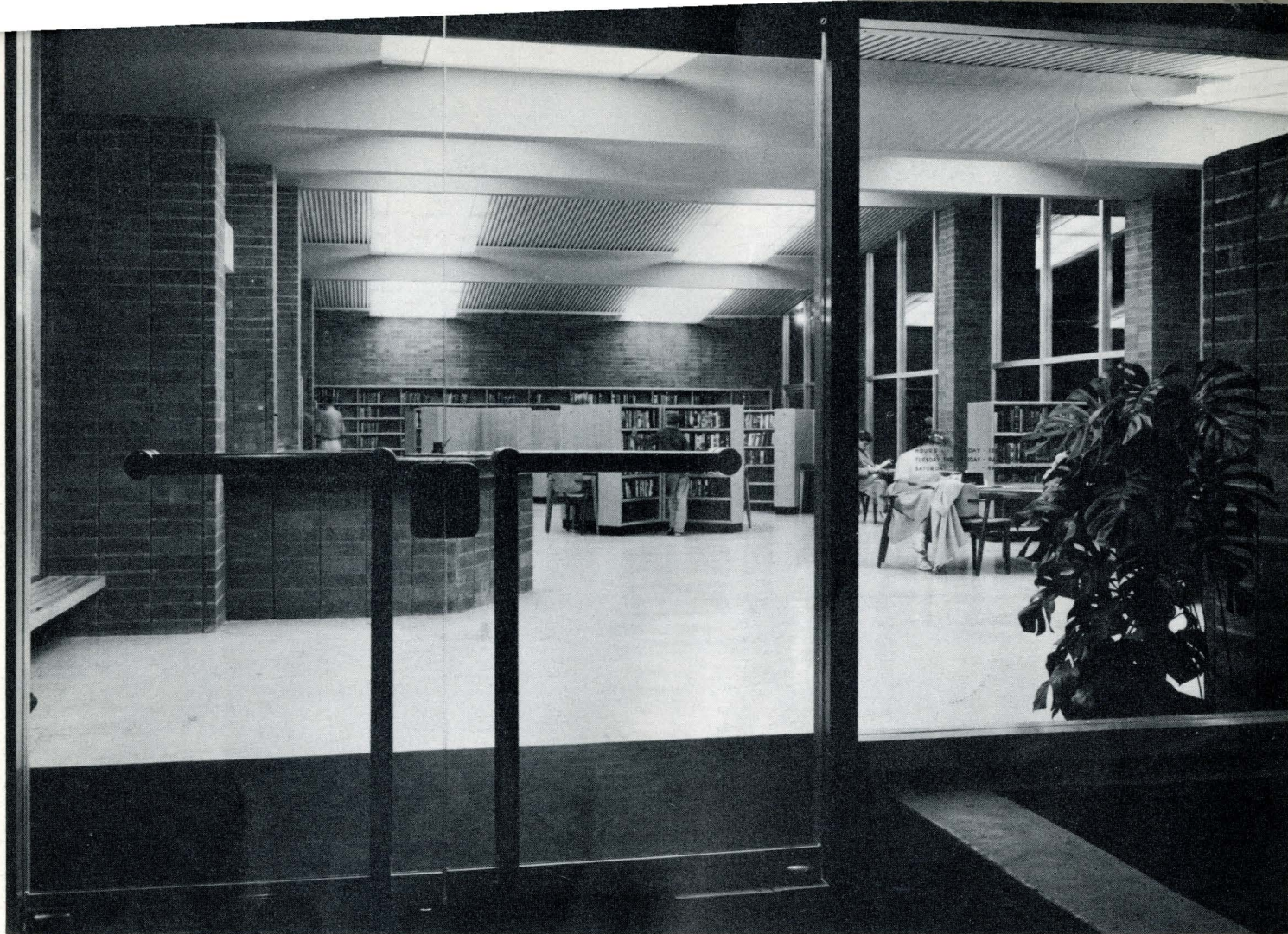
Phil Fein Photos



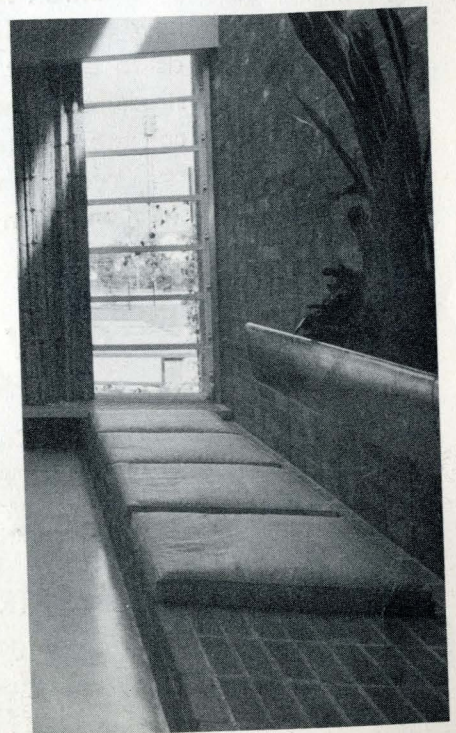


INTERIOR views of main entrance, reading room and stacks show the wide use of exposed interior brick masonry. Recessing of vertical mortar joints accentuates the height of an otherwise basically horizontal structure. Main roof members rest on rugged reinforced brick columns and piers. Note continuation of brickwork in librarian's desk.





EFFECTIVE utilization of the warm, subdued coloring of exposed interior brick masonry has provided the necessary relaxing atmosphere for quiet and study as shown in these additional views of interior through main entrance doorway (top left), librarian's work area (lower left) and main reading room (above). Designers will note the adroit random intermingling of roman brick and glass block in gable (across-page), as well as the ingenious built-in seat of brick to left of fireplace above, detail of which is shown at right.





Exterior entrance to patio.

"BRICK AND TILE" is published to bring to your attention the many new and varied developments within the clay products industry, as well as to present pictorially the beauty and charm which clay adds to all structures. Whether you are concerned with the construction of a colonial cottage or a contemporary industrial plant, clay can fulfill all requirements.

We will welcome inquiries on any phase or type of masonry construction or on the use of any masonry products. Your inquiries may be directed to

CLAY BRICK AND TILE ASSOCIATION

MEMBER MANUFACTURERS

Cannon & Company

Kraftile Company

L. P. McNear Brick Company

Port Costa Brick Works

Remillard-Dandini Company

San Jose Brick & Tile, Ltd.

Stockton Brick & Tile Company

United Materials & Richmond Brick Company, Ltd.

STRUCTURAL CLAY PRODUCTS INSTITUTE

55 New Montgomery Street

San Francisco 5, California