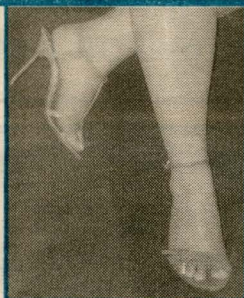
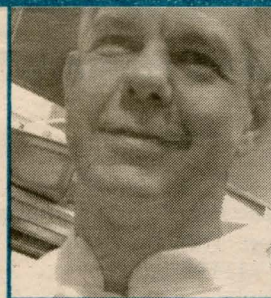


From Steven stilettos
to Sally Spicer totes,
check out this
summer's
fashion hit list
... /2Q



After five years,
restaurant
GARY DANKO
is still the toughest
seat in town
... /Q cover story



Left Coast
Lobster:
Four chefs share
their favorite
recipes
... /Q11



MARINA TIMES

VOLUME 16 ■ NUMBER 12

JUNE 2004

Exterior design plan for Marina library may cover "usable open space"

By Sue Cauthen

The library unveiled its design plan for the exterior of the Marina branch at a Library Commission meeting May 20. San Francisco Public Library's proposal is for an expansion of about 1000 sq. ft. in the front of the building, which would move the facility out toward Chestnut Street.

A preliminary drawing on display in the branch indicates that the new wing will cover about 60% of the long planted area attached to the library west of the front door. This space currently houses a 20-foot tree and assorted shrubbery.

Project manager Marilyn Thompson says the neighborhood will have a chance to weigh in at a meeting later

this summer. Plans for the interior are not ready yet but they could affect the exterior design.

The area earmarked for the expansion is significant because the 6500-sq.-ft. library is in Moscone Playground and there is concern at the Recreation & Park Department that the planned expansion — about one-third the size of the Rec Center basketball court — will cover 'usable open space.'

By virtue of some bureaucratic musical chairs when the library was built in 1953, the Marina branch is on Rec Park land and its own 6000-sq.-ft. parcel (or "footprint") is in front of the building

Library, continued page 3

Planners agree to issue EIR for harbor

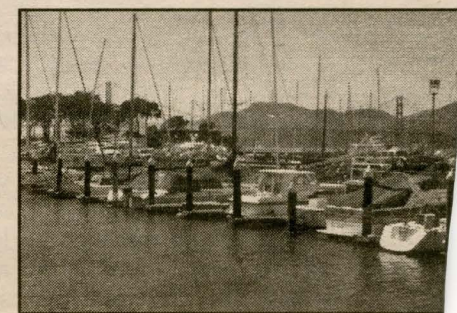
by Paul Lovinger

Facing appeals by three organizations and the National Park Service, the City Planning Department has reversed a decision not to prepare an environmental impact report (EIR) on a project to rebuild the Marina Harbor.

"On the basis of the issues raised on appeal, we have decided that it would be desirable to prepare an environmental impact report," Lisa M. Gibson, senior planner of the Planning Department, said on May 25. "This would allow the public greater review of the results of the additional technical studies that we are proceeding with and input on the environmental effects of the project." She expected the EIR to be completed next winter. A hearing on the appeals, which was scheduled for June 24 before the Planning Commission, has been

Park Department's concept for "Marina Yacht Harbor Renovation" would not significantly affect the environment and so did not require a full EIR.

Appeals from that declaration were filed in February by the Golden Gate National Recreation Area jointly with



the Fort Mason Foundation and by th

esign
parcel
d "a

ader
ndi-
eel-
out
hat
son

e of
he
ng
ee
ric
n
l-
gs

y
e-
e
g
t

Library, from front page

in approximately the southwest corner of the park. Rec Park is using this land, said Thompson.

Turf Troubles

That is part of the reason SFPL chose to expand in front of the building, though there was substantial discussion at the April community meeting about an expansion to the rear or the side nearest the The Marina Middle School. But SFPL and some people at the meeting favored the forward expansion because they felt it would attract more patrons and enliven the area. Another reason is that the library felt its plan would be more acceptable to Rec Park and the Planning Department, which also must sign off on the project. This is a tricky aspect as city planners cite a so-called General Plan that favors removal of all buildings on parkland.

A joint meeting of Rec Park and library commissioners last year produced an accord to work cooperatively in the four city parks or playgrounds that host branch libraries. But the kinks still have to be ironed out, and another joint meeting is on the horizon. Rec Park is beset by substantial financial problems at the moment while SFPL has to proceed quickly with its \$106 million plan to build and renovate branches or risk substantial construction cost increases.

Originally, The Marina branch was set for a 1500-sq.-ft. expansion. That plan was scrapped some time ago as the library pleaded budget problems. Officials said the smaller build-out was sufficient to offset the reduction in interior space because of the seismic, mechanical and technology upgrades.

At a community meeting in April, many patrons asked for an increase in the book collection. City Librarian

Susan Hildreth said she would consider it. However, she is set to leave San Francisco in July to take over the Tucson library system. To date, there is no word on who will replace her. Her second-in-command Paul Underwood is standing in.

Project manager Thompson indicated SFPL may have to convince the Planning Department that the library's present site is the best one possible if it is to serve the Marina community most effectively. At a meeting May 26, she said that Rec Park's primary interest is "the impact the expansion would have on recreation."

The quid pro quo might involve environmentally-sensitive concessions from the library, such as restoring part of the concrete plaza in front of the library to "green space." ■



Thank you Express readers for choosing us.

"Best Hamburger"

12 years in a row 1990 - 2002

\$3 OFF

Barney's Gourmet Hamburger

at these locations only:

3344 Steiner St. @ Chestnut
SF 415-563-0307

4138 24th St. @ Castro
SF 415-282-7770

Buy one burger at the regular price and get \$3 off a second burger of equal or lesser value. Dine-in only.

One coupon per couple. Coupons cannot be combined.

Expires 6/30/04

Dine-in only.

6 locations around the Bay
www.barneyshamburgers.com

Questions? Comments?

Write to us:

letters@marinatimes.com