

BOOKMOBILE

Bookmobile service will be provided near the branch location.

PROPOSED LOCATIONS: Junipero Serra Playground, along Denslowe Dr. (between 19th Ave. and Lyndhurst Dr.) and/or Stonestown Mall Parking Lot.*

Monday 10 a.m. – 12:30 p.m.

Saturday 10 a.m. – 12:30 p.m.

The Bookmobile will offer the following collections and services:

COLLECTIONS

- Books for adults, teens and children
- Media, including CDs, DVDs and audio books
- Magazines

SERVICES

- Obtain or renew a library card
- Borrow and return materials
- Reserve and pick up materials from other SFPL collections and request materials from other library systems via Link+ or interlibrary loan
- Children can sign up and participate in Summer Reading Club 2009.

*For more information on our interim services, please call (415) 557-4353 or refer to sfpl.org



06/02/2009

BUILDING BETTER LIBRARIES FOR STRONGER COMMUNITIES.

The Branch Library Improvement Program (BLIP) is the largest capital improvement campaign in the history of the San Francisco Public Library. The program will provide the public with seismically safe, accessible, and technologically updated city-owned branch libraries in every neighborhood. Funded by a \$106 million bond measure passed by voters in November 2000, BLIP calls for 16 branches to be renovated, four leased facilities to be replaced with city-owned buildings, three branches to be replaced with new buildings, and one brand-new branch to be constructed—the first in 40 years—in Mission Bay (completed in July 2006).

Visit these new and renovated branches to see how beautiful a branch can be!

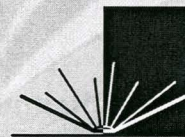
Excelsior	Mission Bay
West Portal	Sunset
Marina	Glen Park
Western Addition	Noe Valley/Sally Brunn
Portola	Richmond/Sen. Milton Marks

Bond funding does not cover the entire cost of the projects: Furniture, fixtures and equipment must be paid for from private donations. Friends of the San Francisco Public Library is raising \$16 million toward these needs. If you're interested in helping with the Neighborhood Library Campaign, please contact Tamara Scheulov (415) 626-7512, ext. 101 or tscheulov@friendssfpl.org.



San Francisco Public Library

Temporary Services During Renovation of the Merced Branch Library



BRANCH LIBRARY
IMPROVEMENT PROGRAM

TEMPORARY SERVICES DURING RENOVATION
OF THE
MERCED
BRANCH LIBRARY

Temporary services are scheduled
to begin following the branch closure.

MERCED BRANCH LIBRARY

The renovation is a part of the Branch Library
Improvement Program. Renovation highlights
include:

- New addition at the front of the building
- New fireside lounge reading area
- Seismic strengthening
- New restrooms
- 24-hour book return
- A designated Teen Area
- Children's Area doubled in size
- New furniture, shelving and materials displays
- More computers with access to the Internet
and library online resources
- Wireless (Wi-Fi) access to the internet
- Express self-service checkout stations
- Infrastructure to provide modern technologies
and flexibility for the future
- New landscaping
- Improved heating and ventilation
- Green Building (LEED Silver)

Updating the branch will enable the San Francisco
Public Library to provide the Merced neighborhood
with a library that is safe, modern and accessible
to all.



STORYTIMES

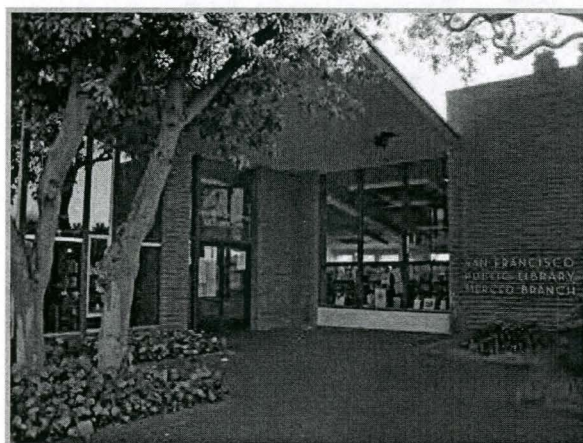
The Merced Branch currently offers weekly
storytimes, and they will continue during renovation.
Location and time to be determined.*

MERCED BOOK CLUB

The book club will continue to meet at
Borders/Stonestown, Wednesday evening,
every other month, 6:30pm.*

SUMMER READING CLUB

Children can sign up and participate
on the bookmobile or at nearby branches*



NEARBY BRANCHES

WEST PORTAL BRANCH (415) 355-2886

190 Lenox Way (at Ulloa)

Monday	1 – 9 p.m.
Tuesday	10 a.m. – 9 p.m.
Wednesday	10 a.m. – 9 p.m.
Thursday	10 a.m. – 6 p.m.
Friday	1 – 6 p.m.
Saturday	10 a.m. – 6 p.m.
Sunday	1 – 5 p.m.

INGLESIDE BRANCH (415) 355-2898

1649 Ocean Ave. (at Faxon)

Monday	Closed
Tuesday	10 a.m. – 6 p.m.
Wednesday	12 – 8 p.m.
Thursday	1 – 7 p.m.
Friday	1 – 6 p.m.
Saturday	1 – 6 p.m.
Sunday	1 – 5 p.m.

OCEAN VIEW BRANCH (415) 355-5615

345 Randolph St. (at Ramsell)

Monday	10 a.m. – 6 p.m.
Tuesday	10 a.m. – 6 p.m.
Wednesday	10 a.m. – 7 p.m.
Thursday	1 – 7 p.m.
Friday	1 – 6 p.m.
Saturday	1 – 6 p.m.
Sunday	Closed

***For more information on our interim
services, please call (415) 557-4353 or
refer to sfpl.org**