

CONTENTS

AMERICAN LIBRARIES | April 2010

Features

30 A LIBRARY GROWS IN NEWBURG

An underserved community gets a long-awaited branch

BY SUSAN MCNEESE LYNCH

34 DESIGNING SPACE FOR CHILDREN AND TEENS

How to carve out a niche that epitomizes service

BY SANDRA FEINBERG AND JAMES R. KELLER

48 MANAGING DIGITAL PROJECTS

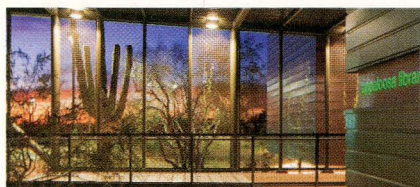
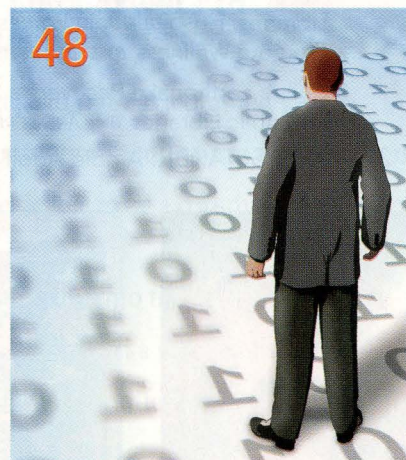
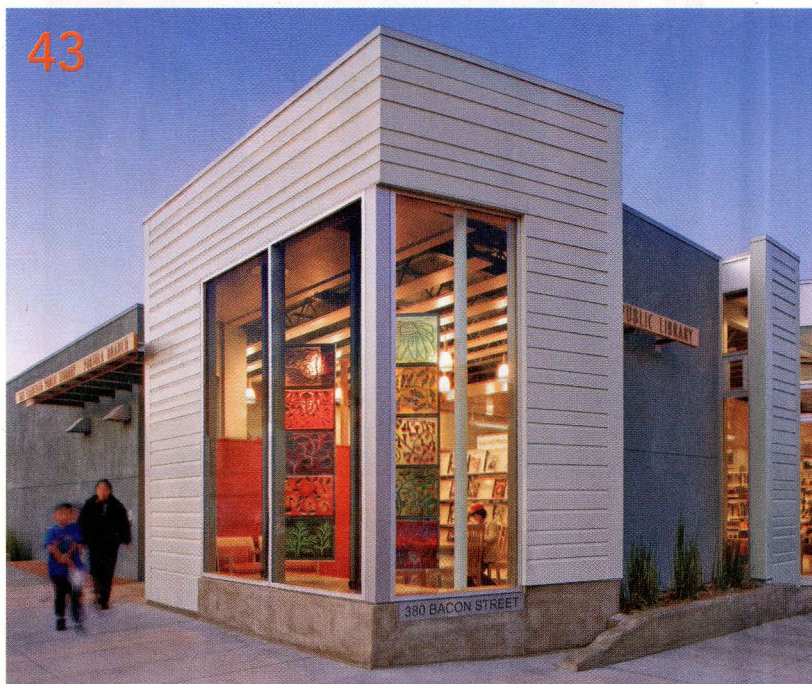
"Accidental" project managers can benefit from following these useful tips

BY IRA REVELS

51 INVEST IN YOURSELF

With very little time you can build your skills, improve your performance, and enhance your opportunities

BY CATHERINE HAKALA-AUSPERK

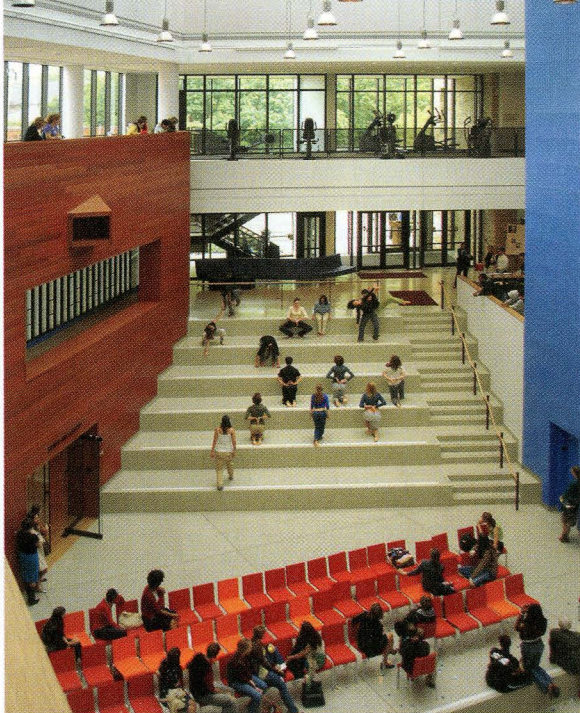


Photograph by Bill Timmerman

Cover Design by Taína Lagodzinski

38 COVER STORY 2010 LIBRARY DESIGN SHOWCASE

Fresh ideas, green construction grace community anchors



GOUCHER COLLEGE ATHENAEUM, BALTIMORE

The Hyman Forum within the Goucher College Athenaeum was modeled after the amphitheaters of Europe, providing a wide-open space whose character can shift depending on what happens to be going on there at any particular time. The building is open 24 hours a day and, in addition to the library and forum, features a café, art gallery, community service center, and spaces for exercise, conversation, and relaxation.

New Construction

Architect: RMJM

rmjm.com

Size: 103,000 sq. ft.

Cost: \$47.5 million

Photo: Jeffrey Tryon/RMJM

SAN FRANCISCO PUBLIC LIBRARY

The Portola branch's open-book motif is represented in sunshades along the building's southern wall that modulate light and reduce heat gain. The shape is echoed in an art installation of revolving stained-glass panels by artist Dana Zed placed in the front windows, while skylights provide additional natural light.

New Construction

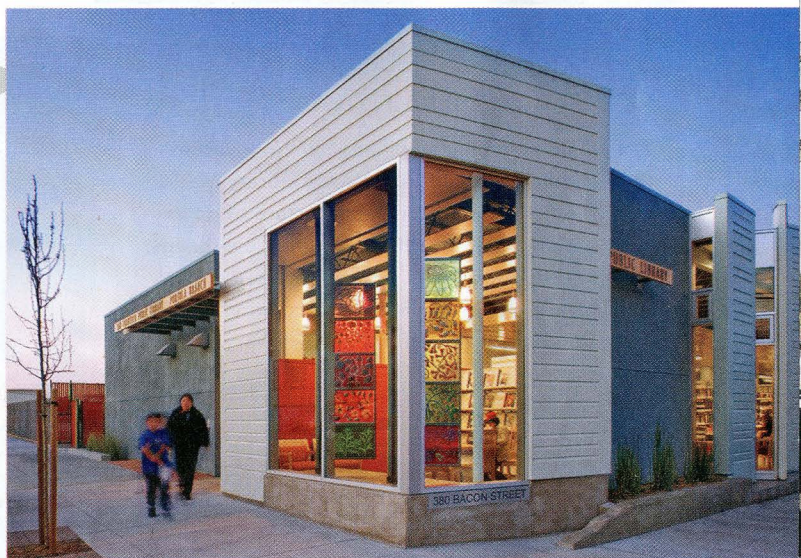
Stoner Meek/Noll and Tam

smarchitecture.com/nollandtam.com

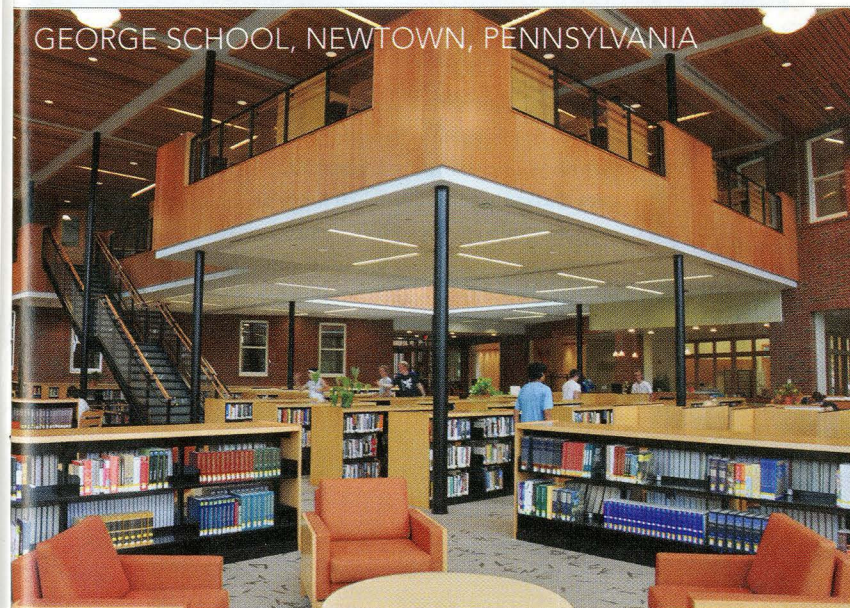
Size: 6,427 sq. ft.

Cost: \$6.2 million

Photo: David Wakely



GEORGE SCHOOL, NEWTOWN, PENNSYLVANIA



A balcony, designed as a quiet study area, surrounds the skylight in the Mollie Dodd Anderson Library. Designed to be consistent with the simple Quaker aesthetic of its community, the library also anticipates earning LEED Gold certification, with features that include a vegetative roof, geothermal heating and cooling, and rain gardens.

New Construction

Architect: Bowie Gridley

bowie-gridley.com

Size: 26,400 sq. ft.

Cost: \$12.5 million

Photo: William Tenenbaum