



San Francisco Public Library

Branch Library Improvement Program Newsletter

Volume 2, Issue 1 February/March 2003

Architects Chosen for Marina, Ingleside and Portola Branch Libraries

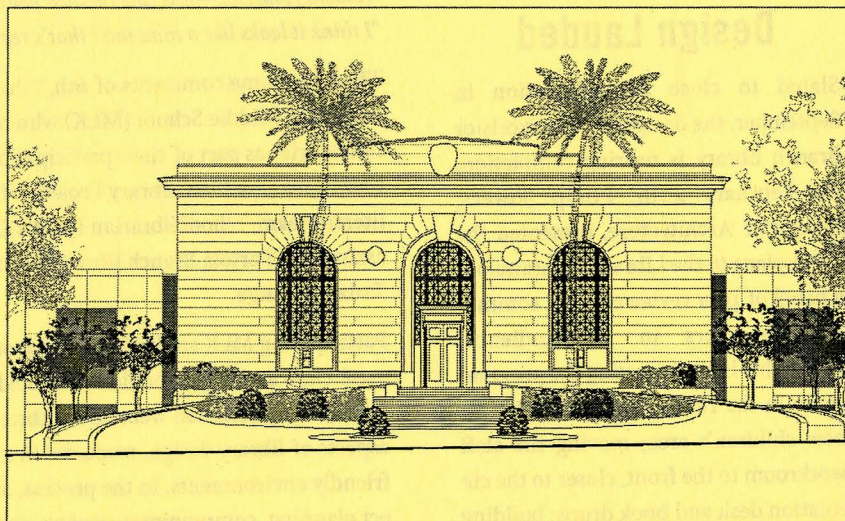
The architectural team of Tom Eliot Fisch/Field Paoli has been selected to design the renovation and expansion of the Marina Branch Library. This partnering team brings a wealth of experience and background in designing libraries and other civic buildings. These include new libraries in Belvedere/Tiburon, San Jose and Sacramento, among many others. The team also has experience in the adaptive re-use and renovation of historic buildings. Tom Eliot Fisch/Field Paoli places great emphasis on their enthusiasm for public libraries.

"As citizens and design professionals, living and working in San Francisco, we recognize that our branch libraries are a symbol and a physical representation of democracy, available to everyone in our diverse community," said Douglas Tom, Principal with Tom Eliot Fisch.

The Marina Branch Library has a seismic hazard rating of four on a scale of one to four, making it most at risk in the event of a major earthquake.

New libraries will be constructed in the Ingleside and Portola communities; these branches currently are housed in rented facilities. A total of 17 architectural teams initially responded to the RFQ, of which six were invited to submit entries for a blind competition. A distinguished panel made up of prominent architects and librarians scored the competition. The winning boards are currently on display at the branches.

The joint venture team of Stoner Meek/Noll & Tam was selected to design the new Portola Branch Library and the Ingleside Branch will be designed by the team of Fougeron Architecture/Group 4 Architecture. These teams have extensive experience



Richmond Branch Renovation Design—9th Avenue exterior

Richmond Branch Plans Unveiled

Services and preliminary plans for the Richmond Branch were unveiled at a community meeting held at the branch on February 13. The renovation and expansion of this historic branch is underway, with construction scheduled to begin in mid-2004. This \$7 million project will include an addition of approximately 4,000 square feet.

The expansion of the branch permits new services, including a 14% increase in the size of the collections, with more teen, audiovisual, and Chinese and Russian materials. Seating capacity will remain approximately the same, with the addition of some comfortable lounge seating. Other new features are two study rooms, a glassed-in Winter Garden, additional public restrooms, a separate teen area and modern technology.

in working on public sector and/or library design.

It is anticipated that the new Portola Branch Library will be built on a portion of the Martin Luther King, Jr. Middle School grounds on the corner of Bacon and Goettingen. The new Ingleside Branch will be built on the site of Sunset Auto, 1298 Ocean Avenue at Plymouth. Property purchases for both parcels are pending.

Upcoming Meetings

March 20 and April 17

Library Commission

4:00 p.m.

Koret Auditorium, Main Library

Excelsior Design Lauded

Slated to close for renovation in September, the design for the Excelsior Branch library is nearing completion. On February 20th, Philip Sowers, Bureau of Architecture, presented the latest plans to the Library Commission, a panel of peer reviewers, and community members in the audience. Highlights include putting the program room in the rear of the library by the new children's area; moving the staff workroom to the front, closer to the circulation desk and book drops; building two new accessible restrooms; creating a separate teen area; expanding the front wall and entrance; and increasing the number of windows. In addition, library staff is working with a community committee to ensure that library programs and services, especially those for children, continue while the Branch is closed for renovation.

San Francisco Public Library
100 Larkin Street
San Francisco, CA 94102

ADDRESS CORRECTION REQUESTED

Students Review Portola Branch Design Options

"It looks like a library which attracts people to come."

"Design B has lots of weird windows—it looks great."

"It looks like a music store."

"More computers is a good choice."

"I like the design because I like the little garden and the homework center."

"It looks futuristic—it is cool because young people will hang out there."

"I think it looks like a mini mall that's really cool & it might make people come."

These are some comments of 6th, 7th, and 8th graders from Dr. Martin Luther King Academic Middle School (MLK) who reviewed the Portola Branch design competition entries as part of their participation in the "Transcontinental Ultimate Children's and Teen Library Project." The project is supervised by the MLK digital literacy team, school librarian Patrick Delaney and tech specialist Karen Claxton and assisted by Portola Branch librarian Roz Chang and teen librarian Marcel Twizemungu.

Participating MLK students are collaborating via the Internet with 4th graders in rural Ohio and high schoolers in Brooklyn, NY. All three groups are contributing suggestions to a common website for library services to their age groups, including aspects of library design, resources in a variety of formats, and creation of youth-friendly environments. In the process, students are learning about architecture, project planning, community surveying, and most importantly, the value of libraries as community institutions. In the next few weeks students will initiate use of the

Ultimate Library Collection website and start sharing their suggestions as part of this exciting program. The project is sponsored by UC Berkeley's Bay Area Writing Project, the Library's San Francisco Education Access program and the Philanthropic Ventures Foundation.

The Branch Library Improvement Program includes the renovation of nineteen branch libraries and the construction of five new libraries. For more information, look at www.sfpl.org or call the Library's Chief of Branches at 415.557.4353 or the Office of the Bond Program Manager at 415.557.4354. Send comments to: BLIP@sfpl.org.