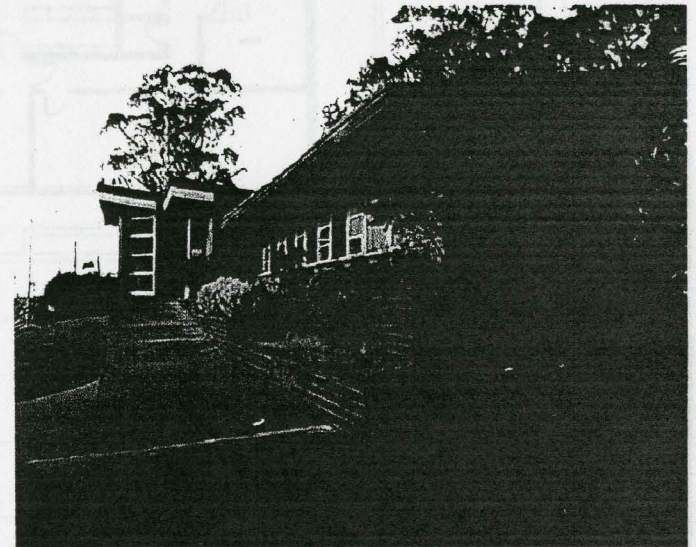


SAN FRANCISCO PUBLIC LIBRARY PARKSIDE BRANCH LIBRARY

CONCEPTUAL PLAN STUDIES

May 17, 2003



Current Plan with
Existing Shelving Layout

[9 + 1]

THOMAS HACKER
ARCHITECTS INC.



Project Team

Owner

San Francisco Public Library
100 Larkin Street
San Francisco, CA 94102-4733

Architect

Thomas Hacker Architects Inc.
733 SW Oak Street, Suite 100
Portland OR 97205
503.227.1254 phone
503.227.7818 fax

Associate Architect

Karin Payson Architecture + Design
17 Jack Kerouac Alley
San Francisco, CA 94133
415.277.9500 phone
415.277.9505 fax

Index to Sheets

Current Plan with Existing Shelving Layout

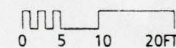
Remodel

Expansion (no Program Room)

Expansion with Program Room

Graphic Key

Shear / Concrete walls
New Walls
Property Line

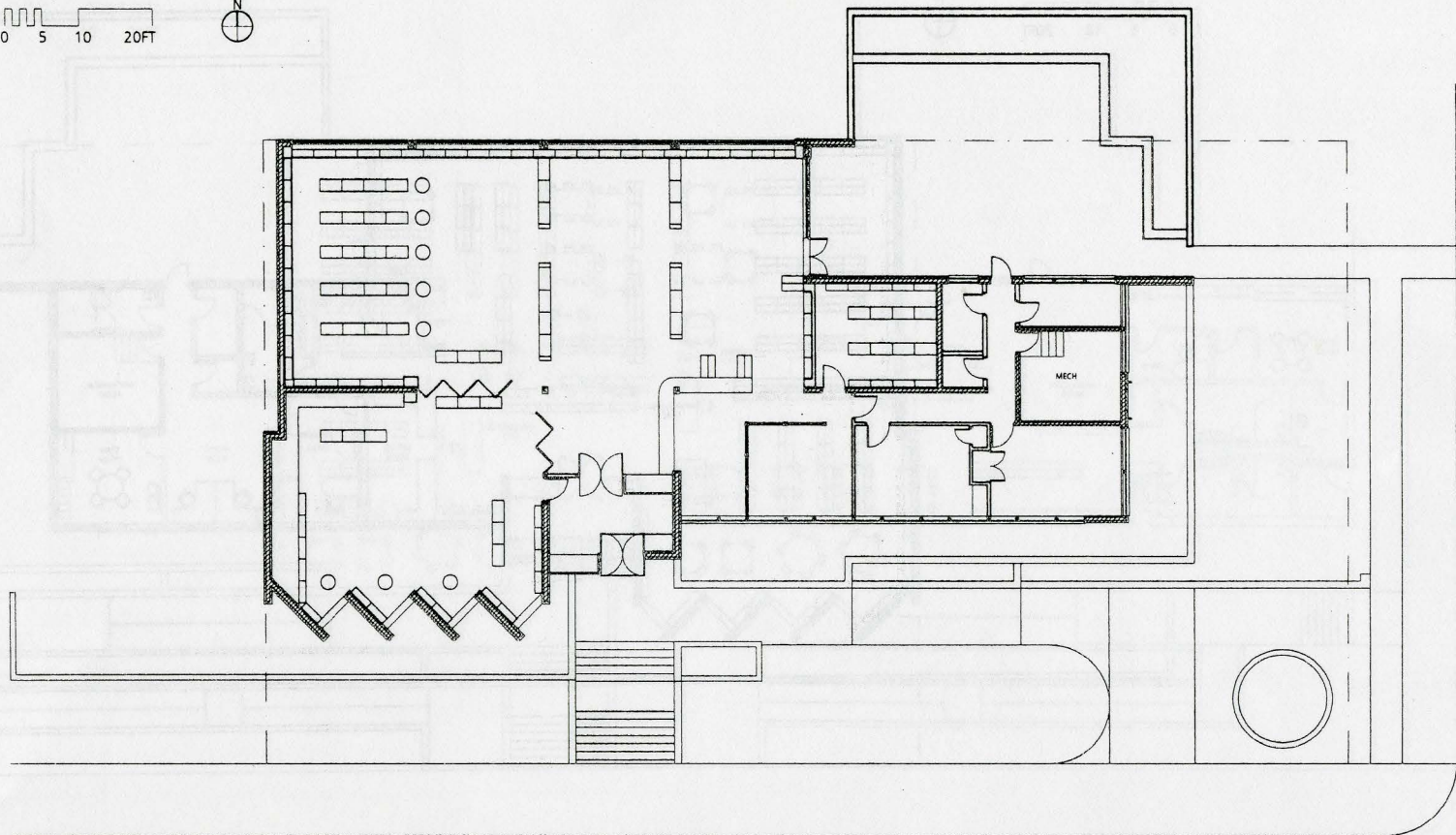
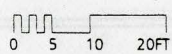


Key and Index



THOMAS HACKER
ARCHITECTS INC.





May 17, 2003

Net Area (SF)

Public Areas 3,697
Program Room N/A
Work Areas 609
Staff Room 232

Total 4,538

Gross Areas (SF)

Original Building 5,890
Addition N/A

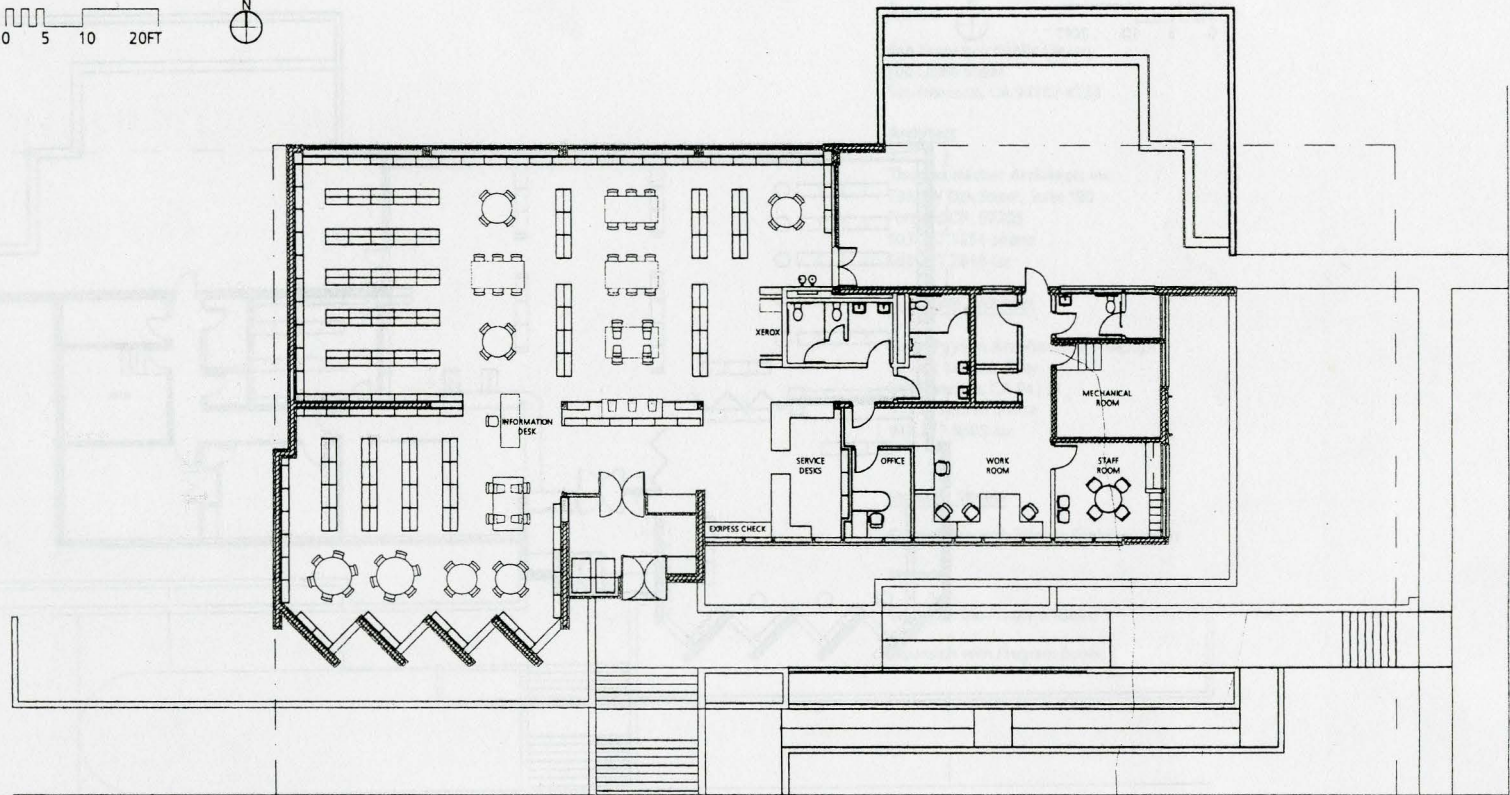
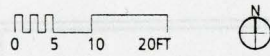
Total 5,890

Ratio 0.77

Key Points

- . Shelving shown includes paperback "spinners".
- . Book bins not shown.

**Current Plan with
Existing Shelving Layout**



May 17, 2003

Net Area (SF)

Public Areas	3,566
Program Room	N/A
Work Areas	629
Staff Room	174

Total 4,369

Gross Areas (SF)

Original Building	5,890
Addition	N/A

Total 5,890

Ratio 0.74

Key Points

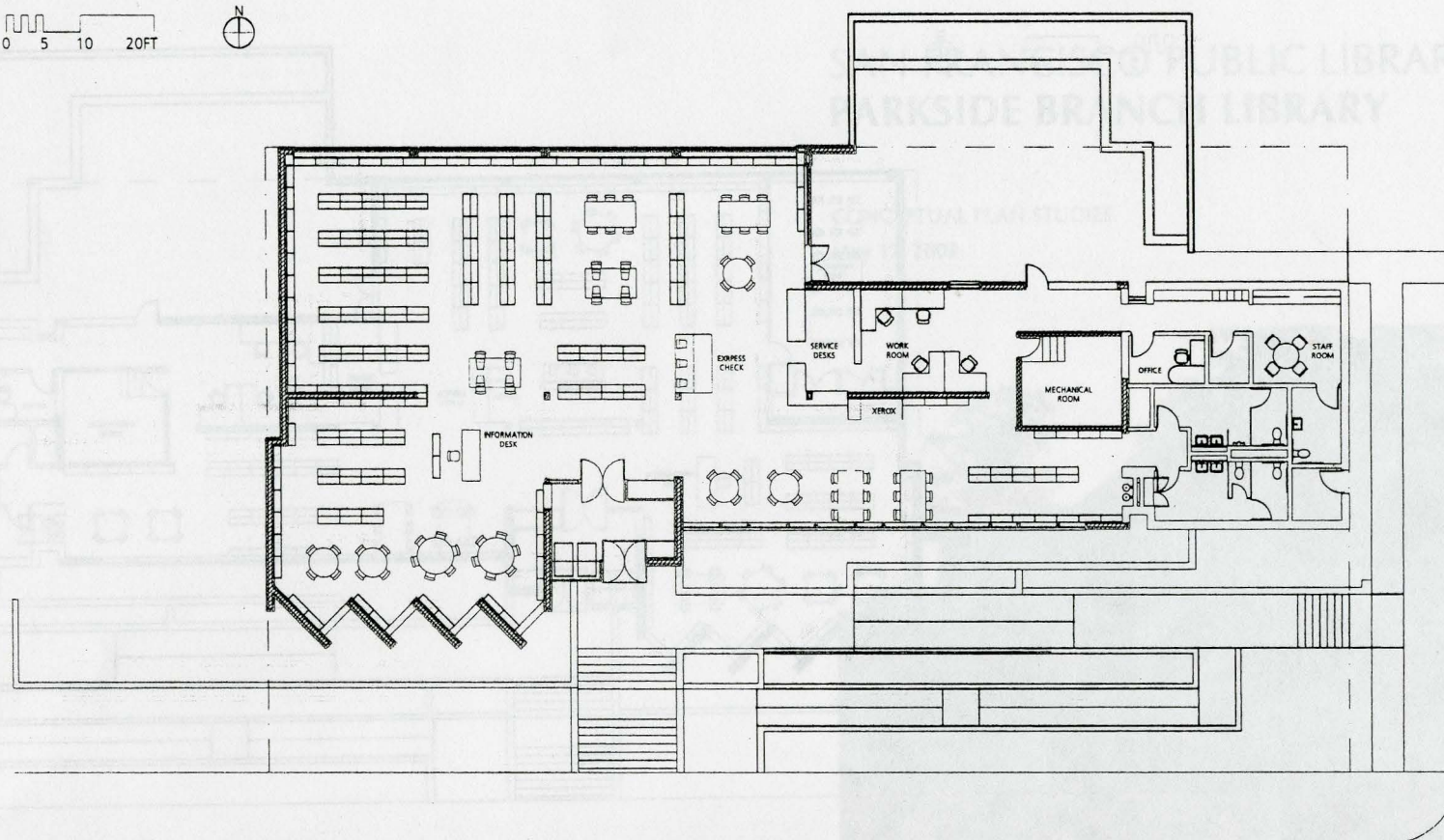
- . Large Circulation Desk
- . Entry to Restrooms exposed
- . Re-do ramp to East for compliance
- . Approximately 400 LF of programed shelving not included (this represents approximately 3500 volumes).
- . Accommodates all seating requirements.
- . No program room or private office.
- . Fits current budget and schedule.

Remodel

THOMAS HACKER
ARCHITECTS INC.



0 5 10 20FT



May 17, 2003

Net Area (SF)

Public Areas	4,440
Program Room	N/A
Work Areas	549
Staff Room	155
Total	5,144

Gross Areas (SF)

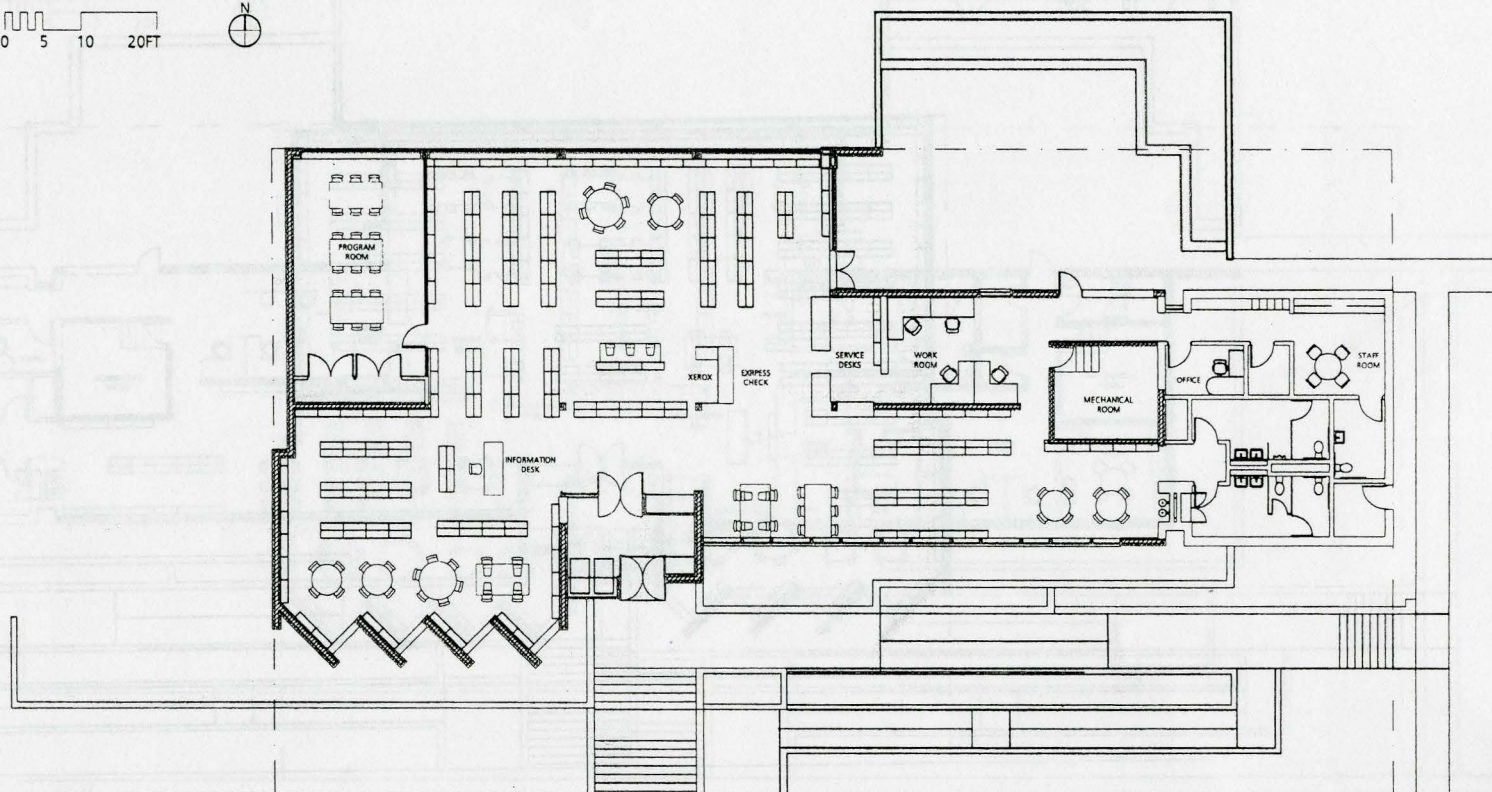
Original Building	5,890
Addition	985
Total	6,875
Ratio	0.75

Key Points

- . Addition at east side of existing building.
- . Re-do ramp to east for code compliance
- . Major shear wall affected
- . Does not include program room
- . Accommodates entire collection and seating requirements.
- . Private entry to restrooms
- . Increased cost / schedule

**Expansion (no
program room)**

0 5 10 20FT



May 17, 2003

Net Area (SF)

Public Areas	3,892
Program Room	554
Work Areas	541
Staff Room	155
Total	5,142

Gross Areas (SF)

Original Building	5,890
Addition	985
Total	6,875
Ratio	0.75

Key Points

- . Addition to East.
- . Re-do ramp to East for compliance
- . Major shear wall affected.
- . Includes program room.
- . Accommodates entire collection and seating requirement.
- . Private entry to restrooms.
- . Increased cost / schedule.

**Expansion with
Program Room**

THOMAS HACKER
ARCHITECTS INC.

